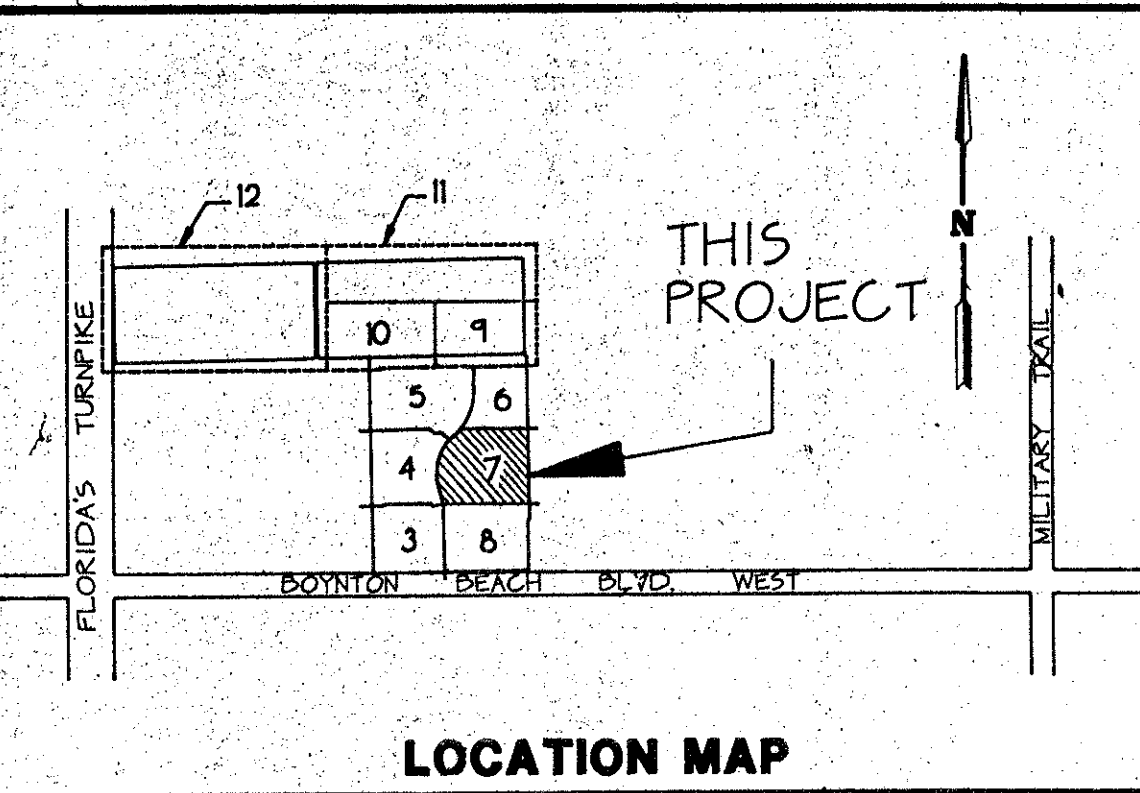


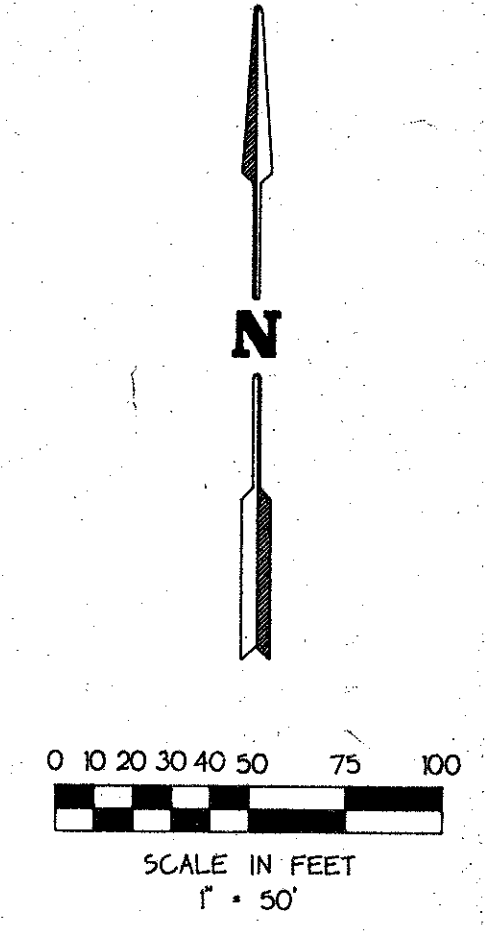
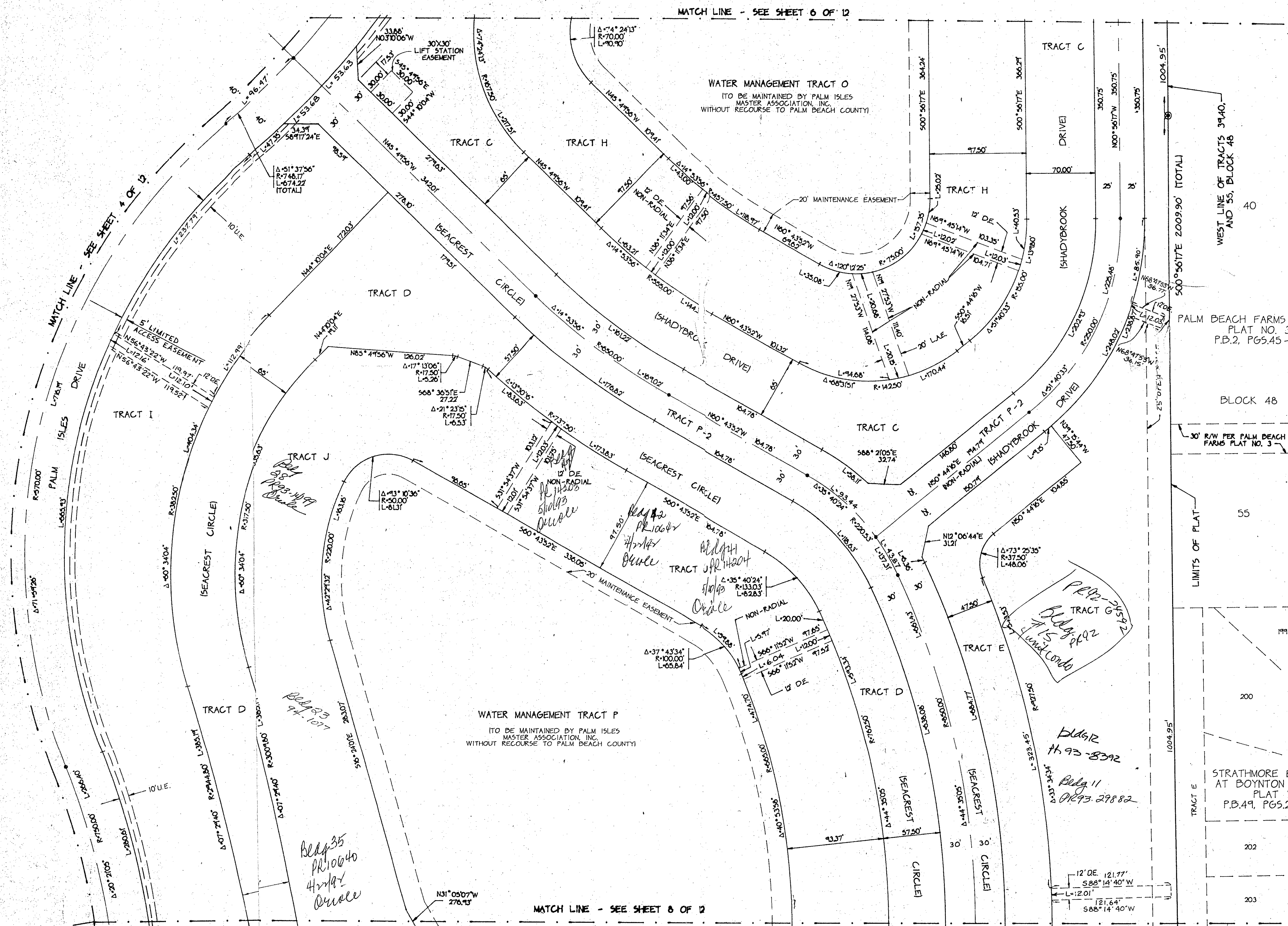
PALM ISLES, A P.U.D. 571-001

A REPLAT OF A PORTION OF BLOCK 49 OF PALM BEACH FARMS COMPANY PLAT NO. 3 AS RECORDED IN PLAT BOOK 2, PAGES 45 THROUGH 54 INCLUSIVE OF THE PUBLIC RECORDS OF PALM BEACH COUNTY, FLORIDA IN SECTION 21, TOWNSHIP 45 SOUTH, RANGE 42 EAST, PALM BEACH COUNTY, FLORIDA

THIS INSTRUMENT PREPARED BY JAMES E. PARK, P.L.S. WILLIAMS, HATFIELD & STONER, INC. - ENGINEERS PLANNERS SURVEYORS 1325 SOUTH CONGRESS AVENUE, SUITE 118, BOYNTON BEACH, FLORIDA 33426



SHEET 7 OF 12



NOTE: SHEETS 3 THROUGH 10 AT 1" = 50' SHEETS 11 AND 12 AT 1" = 100'

PALM ISLES
PHASE 122
FLOOD MAP # 155A
ZONING R5
ZIP CODE 33437
QUAD # 50
JOB # 87-92
PLS NAME SOURCE
2/15/74

TAL 443

Bldg 35
PR 10640
4/2/92
Orule

PR 12-30592
Bldg 82
7/15/92
Orule

Bldg 12
H 92-8392
Bldg 11
PR 93-29882

Bldg 30
PR 92-11039
4-28-92
Bldg 32
PR 92-11593
4-30-92
Bldg 83
PR 92-23708
8-26-92
Bldg 87
PR 93-28962
10-20-92

DUPLICATE